



# Welcome!

## PARCC 101

What parents need  
to know

---

# Presented by:

- ◉ Dr. Amy Berdos ~ Assistant Superintendent
- ◉ Dianne Casilli ~ ELA/Social Studies Director
- ◉ Michele McCarthy ~ Burrell principal
- ◉ Alison Mello ~ Math/Science Director
- ◉ Peter Regan ~ Taylor principal
- ◉ Michael Stanton ~ Igo principal

# Goals for tonight



- Become familiar with PARCC:
  - Why?
  - When?
  - What?
- Understand the differences between PARCC and MCAS
- Learn how to support your child at home

# PARCC: Why now?

***Did you know that MCAS is 16 years-old??***

***To say that a lot has changed since 1998 would be an understatement!!***

Schools have been transitioning to new college- and career-ready academic standards since 2010

***New standards require a new assessment system that:***

- Emphasizes the problem-solving and thinking skills needed for success in college and the workplace
- Is computer-based (with a paper/pencil option)
- Will support a smoother transition to college with historic placement agreement between K-12 and higher education
- Could replace MCAS for ELA and Math in 2016 for grades 3-8 and for grade 10 after 2019

# Why Foxboro?

## This year is just a 'test-drive'

Participating gives us a sneak-peek at the test  
We will get to see:

- The rigor of the questions
- How students feel about their preparation
- What we are doing well
- Where we may need to fortify our curriculum/instruction
- How the test differs from MCAS **BEFORE IT COUNTS**

# When...exactly?

**Performance-Based  
Assessment (PBA)**

**March 23 – April 3**

**End of Year  
Assessment (EOY)**

**May 11 – May 22**



# What...exactly?

**English Language Arts**

**3 Test Sessions**

**Mathematics**

**2 Test Sessions**



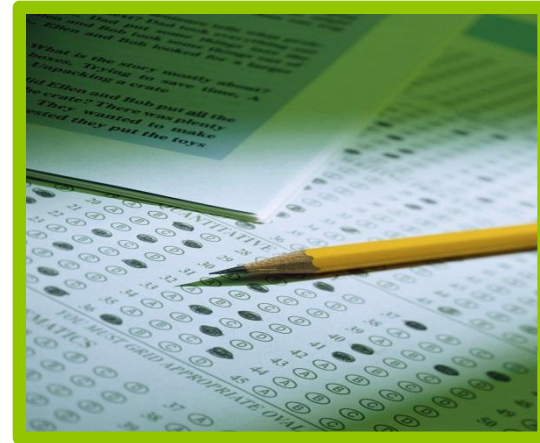
# So What Does PARCC Look Like?

It includes 3 parts in English language arts  
and 2 parts in math

		English Language Arts	Mathematics
Part 1	Performance-Based Assessment (hand-scored) Late March—early April	<ul style="list-style-type: none"><li>• Writing effectively</li><li>• Analyzing print and video texts</li></ul>	<ul style="list-style-type: none"><li>• Solving multi-step problems</li><li>• Using abstract reasoning (<b>Standards of Math Practice</b>)</li></ul>
Part 2	End-of-Year Assessment (computer-scored) May	<ul style="list-style-type: none"><li>• Reading comprehension</li></ul>	<ul style="list-style-type: none"><li>• Understanding major grade-level appropriate math concepts</li></ul>



# How is PARCC different from MCAS?



MCAS	PARCC
Untimed	Timed
Multiple Choice	Selected Response
Separate administrations of ELA/Math	Two concurrent administrations of ELA/Math
Writing assessed in grades 4, 7, 10	Writing assessed in ALL grades
Results received during next year	Results received within the year*
Questions mostly multiple choice	Questions mostly open-ended*
Individualized reference sheets	Standard accessibility features*

# Let's Take a Closer Look at Each of These:



MCAS	PARCC
Untimed	Timed ✓
Multiple Choice	Selected Response ✓
Separate administrations of ELA/Math	Two concurrent administrations of ELA/Math ✓
Writing assessed in grades 4, 7, 10	Writing assessed in ALL grades ✓
Results received during next year	Results received within the year* ✓
Questions mostly multiple choice	Questions mostly open-ended* ✓
Individualized reference sheets	Standard accommodations* ✓

## MCAS

**3 Types  
of ?'s**

**Multiple Choice  
Short Answer  
Open Response**

## PARCC

**3 Types of tasks**

**Type I Tasks** will assess concepts, skills and procedures including a balance of conceptual understanding, fluency and application

**Type II Tasks** will assess expressing mathematical reasoning requiring written arguments or precision in mathematical statements (MP 3, 6)

**Type III** Tasks will assess modeling/ applications in a real-world context (MP4)

## MCAS

- **Typical question with 4 choices and 1 correct answer.**

## PARCC

- **Technology Enhanced Constructed Response (TECR)** – Questions that ask students to cut and paste or drag and drop information into an answer box.
- **Questions can have from 4 to 7 choices and more than 1 correct answer.**

**MCAS****4 Types  
of ?'s**

**Multiple Choice  
Short Answer(Gr. 3)  
Open Response  
Long Comp. (Gr. 4)**

**PARCC**

**3 Types of Tasks** – will assess whether students can read and comprehend a range of texts independently, write effectively when using/analyzing sources, and can build and present knowledge through research and the comparison and synthesis of ideas

- **Literary Analysis Task**
- **Research Simulation Task**
- **Narrative Writing Task**

## MCAS

- **Typical question with 4 choices and 1 correct answer.**

## PARCC

- **Evidence Based Selected Response (EBSR)**
  - A – Is a Question that asks for an answer or answers.
  - B – Is a question that asks for evidence to support the answer in A.
- **Technology Enhanced Constructed Response (TECR)** – Questions that ask students to cut and paste or drag and drop information into an answer box.
- **Questions can have from 4 to 7 choices and more than 1 correct answer.**

## MCAS

### 2 types of writing - 2 forms

#### 1 day- 1 Long Comp (Not text-based)

Grade 4 Narrative

Grade 7 Expository

Grade 10 Literary Analysis

#### 2 days- 3 Open Response (short form analysis)

Thesis, 2 body paragraphs with topic sentences, evidence and explanation

Analyze literature

Analyze informational texts

## PARCC

### 3 types of writing - many forms

#### 1 day Narrative essay:

Based on text

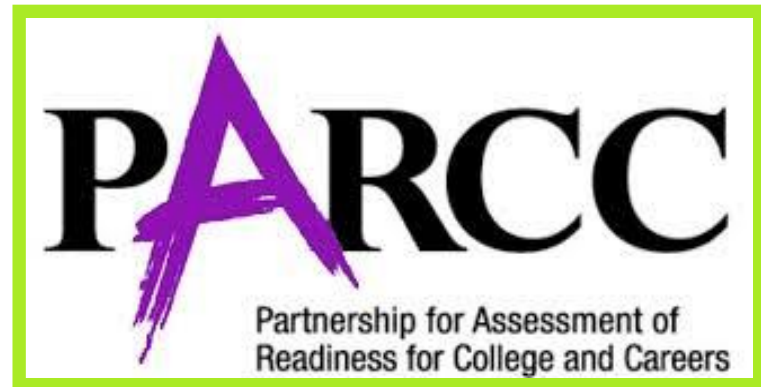
#### 1 day Analysis essay:

Based on 2 literary texts

#### 1 day Analysis essay:

Based on 3 Informational texts  
(1 multimedia)

# A Quick Comparison:



**MCAS Questions**  
**VS**  
**PARCC Questions**



# GRADE 3



Question 3 is a short-answer question. Write your answer to this question in the Answer Box provided.

- 3** In Lisa's class,  $\frac{2}{3}$  of the students are girls.

In the Answer Box below, write a different fraction that is equal to  $\frac{2}{3}$ .

**Answer Box**

**3**



$$\frac{2}{6} < \square$$

Select the **three** fractions that make this comparison true.

☐ A.  $\frac{8}{6}$

☐ B.  $\frac{2}{8}$

☐ C.  $\frac{2}{4}$

☐ D.  $\frac{2}{3}$

☐ E.  $\frac{1}{6}$

# Grade 3 ELA MCAS

12 Based on the selection, what is the **most likely** reason Tino chooses to show his model car to Mrs. Sunday?

- Ⓐ It is a gift for her.
- Ⓑ It is important to him.
- Ⓒ It is like one she made.
- Ⓓ It is the biggest one he owns.

16 How does Tino feel about Mrs. Sunday at the end of the selection?

- Ⓐ He feels proud of her.
- Ⓑ He feels sorry for her.
- Ⓒ He feels worried about her.
- Ⓓ He feels comfortable with her.

# Grade 3 ELA PARCC

## 10. Part A

Derrick and the narrator start to make fish faces. How does this affect what happens next in the story?

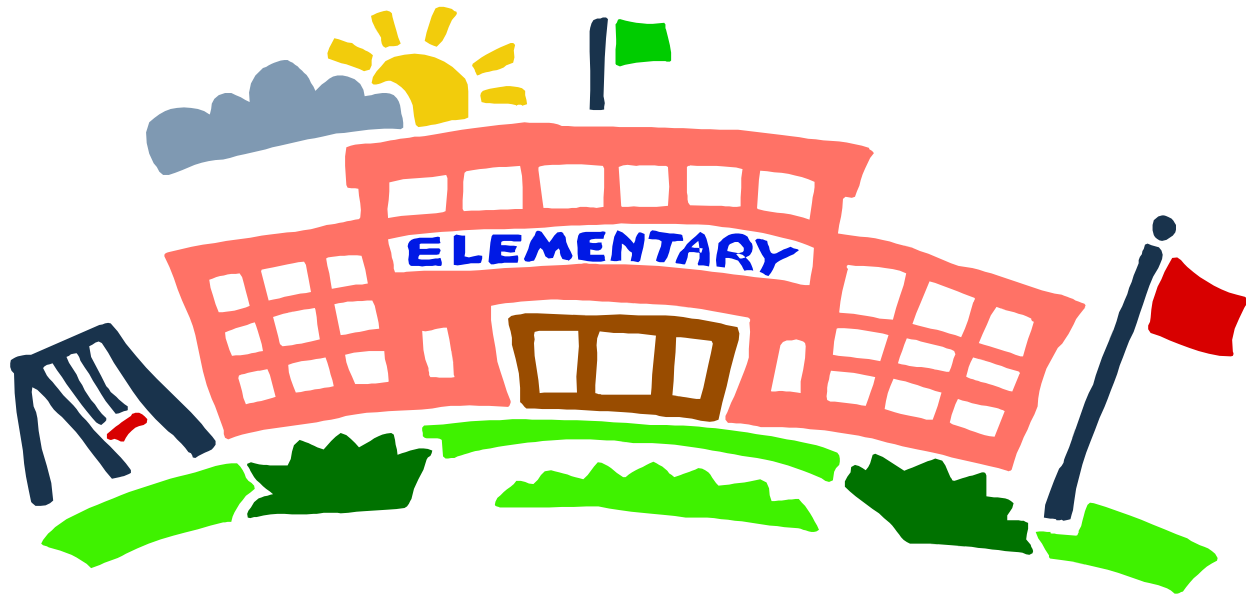
- Ⓐ It helps Dad feel better, and he joins in.
- Ⓑ It upsets Dad, and the boat almost sinks.
- Ⓒ It surprises Dad, and he lets go of the motor.
- Ⓓ It leads Dad to a solution, and they catch fish.

## Part B

Choose **two** details from paragraphs 28 through 33 that support the answer to Part A.

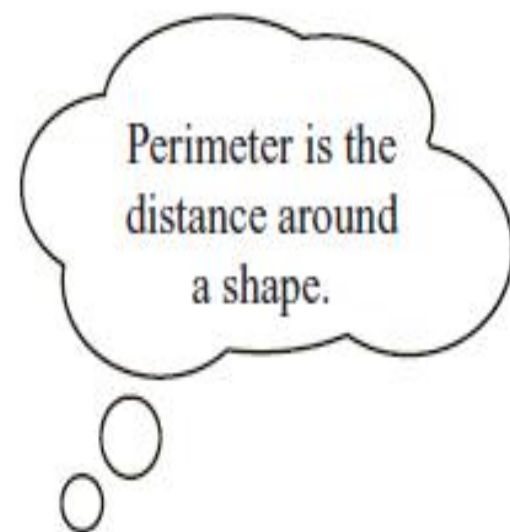
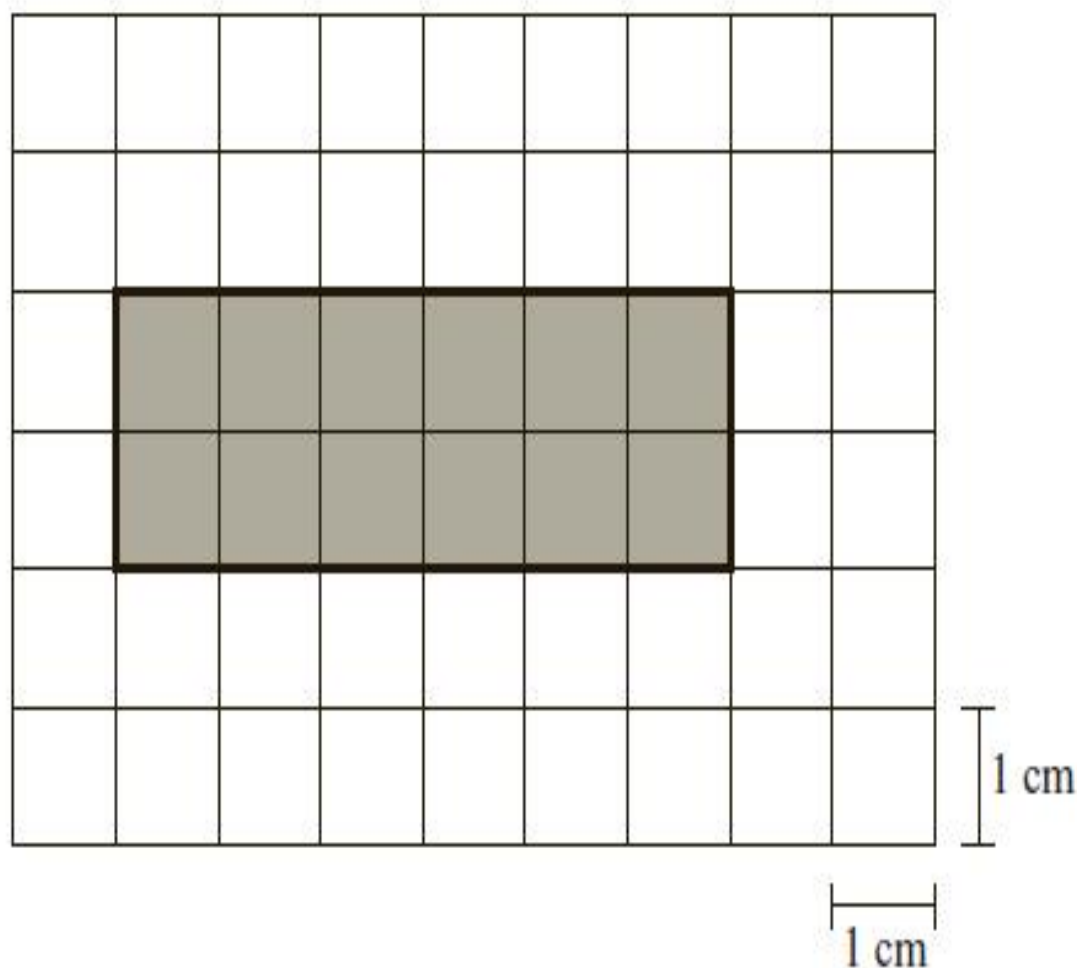
- Ⓐ “. . . his favorite fish, the largemouth bass.”
- Ⓑ “‘Fishy, fishy, bite my hook,’ he chanted. . . .”
- Ⓒ “Dad’s bass frown upturned into a grin.”
- Ⓓ “. . . the boat started sinking.”
- Ⓔ “. . . should there be this much water in your boat?”
- Ⓕ “We barely reached shore. . . .”

# GRADE 4



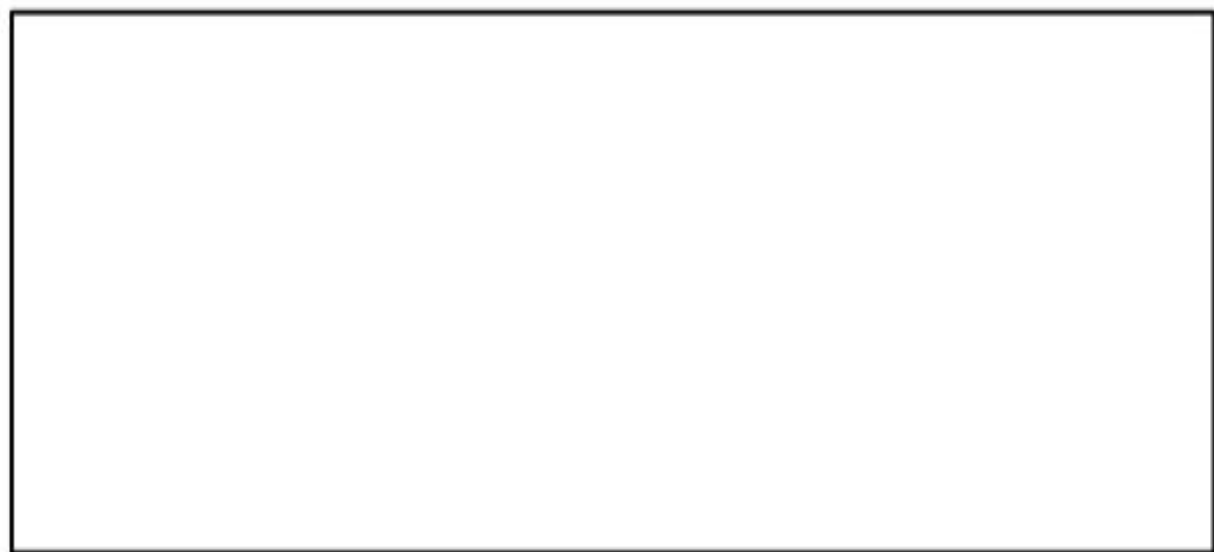
You may use your MCAS ruler to answer question 19.

- 19** Marty drew a rectangle on a grid. He shaded the rectangle, as shown below.



- a. What is the perimeter, in centimeters, of Marty's rectangle? Show or explain how you got your answer.

The model shows a hallway in Clark's house.



? meters

$3\frac{9}{10}$  meters

### Part A

The perimeter of the hallway is  $10\frac{4}{10}$  meters.

What is the width, in meters, of the hallway?

Enter your answer in the space provided.



# Grade 4 ELA MCAS

- 6 Reread paragraphs 5 and 6. Based on the paragraphs, a *mock* rock is a rock that is
- A. old.
  - B. fake.
  - C. dark.
  - D. smooth.

# Grade 4 ELA PARCC

## Part A

Read the sentence from paragraph 7 of “The Wild Horses of Assateague Island.”

Assateague’s horses are uniquely adapted to survive on a barrier island.

What does the word **adapted** mean as it is used in the sentence?

- Ⓐ chosen because of a gentle manner
- Ⓑ changed in order to fit certain conditions
- Ⓒ cared for because of harsh living conditions
- Ⓓ colored in order to match the surroundings

## Part B

Which statement from “The Wild Horses of Assateague Island” **best** supports the answer to Part A?

- Ⓐ “Genetically they are considered horses, even though they are now pony size.”
- Ⓑ “Many of the horses live in the marshes close to their best food sources.”
- Ⓒ “Foals are usually born in late spring . . . .”
- Ⓓ “This helps maintain a hardy, healthy population of wild horses.”

# Grade 4 ELA MCAS

- 7 Based on the article, explain what climbers can learn from practicing at indoor gyms. Support your answer with important information from the article.

# Grade 4 ELA PARCC

- 17.** You have read a passage from "The Wild Horses of Assateague Island," "Wild Ponies of Chincoteague," and "In Thunder and Rain, Chincoteague Ponies Make Annual Swim." Think about the illustrations from the passages and how they help the reader learn more about the ponies.

Write an essay explaining what can be learned from the illustrations about the lives of the ponies described in the passages. Include details from all three sources in your explanation.

# A few MYTHS...



- Schools not taking the test online are at a disadvantage
- PARCC = more time on testing
- The online questions are harder/easier than the paper test questions
- The test will be easier than MCAS...a step backwards
- We are definitely adopting PARCC

# How can parents help?

## MATH

- Ask your child to explain how they solve problems
- Encourage them to attack problems in different ways

## ELA

- Read with your child
- Talk about what's read
- Share you thinking

- Cultivate strong homework routines
- Encourage students to ask questions in school
- Discuss daily learning with your child
- Explore the PARCC practice tests to familiarize yourself and your child with the expectations

# PARCC Practice Test Resources

<http://practice.parcc.testnav.com/>

- Online tutorial to introduce the online practice tests  
\*Currently available for grades 3-11
- Practice End-of-Year Assessments for math
- Practice Performance-Based Assessments for ELA
- Print versions of rubrics and released items

## Coming soon:

- Practice Performance-Based Assessments for math
- Practice End-of-Year Assessments for ELA